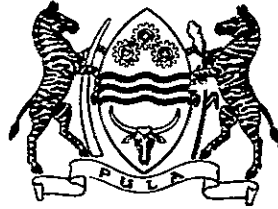


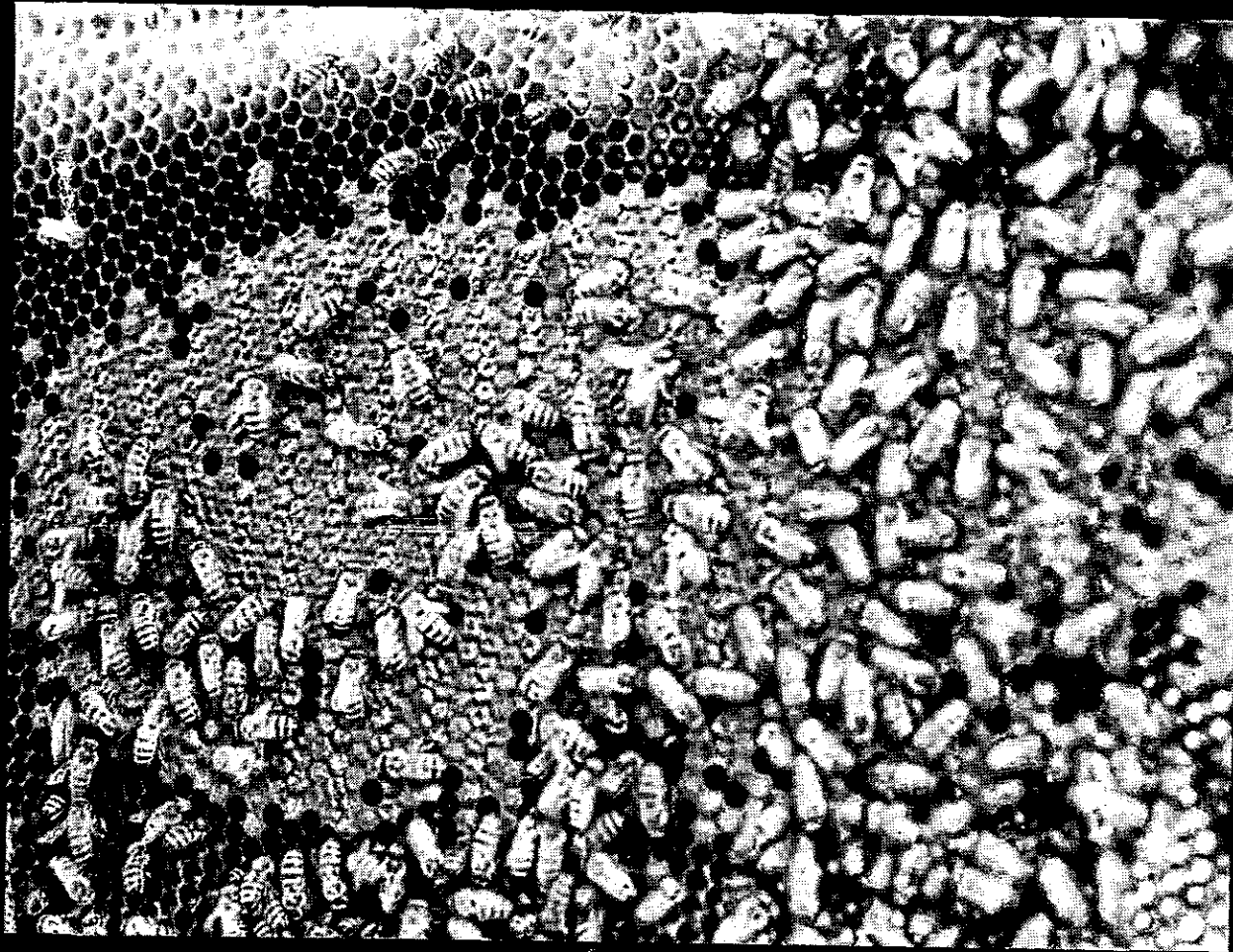
on website 4/4/12.

Scanned Botswana1907.pdf  
-check if uploaded to  
website



REPUBLIC OF BOTSWANA

MINISTRY OF AGRICULTURE  
Department of Crop Production and Forestry



BEEKEEPING  
ANNUAL REPORT  
1990 - 1991

## C O N T E N T S

1. Introduction
  2. Unit's Staff situation
  3. Office Accommodation
  4. Apicultural Courses
  5. Bee Management Practises
  6. Agric. Shows and International Trade Fairs
  7. Procurement of Equipment and Protective Clothing
  8. Distribution of Colonies at the end of Financial year 1990/91.
  9. General Comments
  10. Conclusion
-

APICULTURAL ANNUAL REPORT FOR MARCH '90  
TO APRIL, 1991

Introduction

Apiculture is gaining momentum in the country as the adoption rate increases. However the unit is still facing a problem of man power shortage and transport to carry out the activities.

Project awareness was greatly embarked, during this financial year through courses, 4B Shows, Agric Shows and Kgotla meetings.

Follow-ups where possible were done to ensure that proper management practices are done. Sale of protective clothing was done to ensure that farmers do not depend on the unit staff to open their colonies.

Production have gone down this year because of the torrential rains during the months of January to March thus making the bees to depend on their stores. Training of staff both formally and informally was done as a means of improving staff situation in the unit.

Colonies and swarms were reported and the section was trying its level best to capture them despite the shortage of transport. However some of these newly captured colonies and swarms absconded due to poor management by the beekeepers.

Unit's Staff Situation

One officer left for studies to persue Diploma in Beekeeping. The unit is still having two trainees who are on the job training. In addition five more trainees were recruited and were attached to Regional Technical Officers in the regions.

They are to be trained for at least two years and then go for further studies. The unit is currently having the same staff in the regions just like in the last years report.

### Office Accommodation

The Unit is still having the same office accommodation problem as in the last year's report. The offices are very small and sometimes they are forced to share that small office with other officers. Even in Headquarters, the unit has long been accommodated in the Crop Production offices. The office is also too small as there is no store-room and some important books and stores have to be stored in the same office.

The office is also a distant away from the Division (Forestry, Range Ecology and Beekeeping), thus this result in poor flow of information from the colleagues and sometimes even left out when decisions are made for the division.

### I Apicultural Courses

More courses were run for the farmers, clubs, school clubs, 4B clubs Technical Assistants and Tirelo Sechaba participants. These were for both the beginners and those who already keep bees. Forty courses were booked and only seven failed due to transport problems or course participants not informed in time. The following are the courses for all the regions.

REGION	DISTRICT	NO. OF PARTICIP.	KIND OF PARTICIPANTS	EX. AREA	REMARKS
Gaborone	K/West	6	Farmers	Takatokwane	Successful
	B/Tlokweg	15	Farmers	R/North	Successful
	B/Tlokweg	15	4 members	Dikgatlhong/ Hukung	Successful
	K/South	15	Farmers	Monwane Mmanoko	Successful
	B/Tlokweg	10	Farmers	Mogobane	Successful
	K/South	39	Wildlife Club	Monwane	Successful
	K/South & North	-	Farmers	Thamaga K/N	Failed course participants were not organised in time
<b>Total No</b>	<b>Participants</b>	<b>100</b>			
Ngamiland	Ngami West	11	Students	Shakawe	Successful
	Ngamiland	12	A/D	Ngamiland & Chobe	Successful
	Ngami West	40	Secondary Students	Etsha	Successful
	" "	32	Primary Students	Etsha	Successful
	" "	30	Farmer	Ghooshe	Successful
	" "	16	Farmers	Xaixai	Successful
	" "	11	Farmers	Khwai	Successful
	Ngami East	8	Students	Tsodilo/ CJSS	Successful
	" "	21	Students	MSS & Tsodilo CJSS	An advance course for the students and was successful
<b>Total No.</b>	<b>Participants</b>	<b>181</b>			

Western Ngami East & Ghanzi 34 Students Maun Sec. School and Itekeng Sec. Successful

	Hukuntsi	-	Remote area dwellers	Remote areas	Failed participants not organised in time.
	Ghanzi	6	Farmers	Ghanzi	Successful
	Hukuntsi	-	Students	Matsha Coll.	Failed students did not turn up
	Ghanzi	10	Farmers	Ghanzi	Successful
<b>Total No.</b>	<b>Participants</b>	<b>50</b>			
Southern	Ngwaketse Central	-	Farmers	Tswidi, diabo Mabadisa	Course failed It was nearing christmas
	Ngwaketse West	8	"	Mabutsane, Mogotshwane, Mookane, Sesung.	Successful
	" South	5	"	Borobadilepe Good-hope, Tlhareselele	Successful
	Borolong	4	"	Gathwane Mogojogojo Gangaolela	Successful
<b>Total No.</b>	<b>Participants</b>	<b>17</b>			
Francistown	Tati	7	T/A & TSPs	All Ext. areas	Successful TA's did not turn up
	Tonota	15	Farmers	Matsiloje	Successful
	Bobonong	15	"	Sefophe	"
	"	25	"	Molalatau	"
	Boteti	9	4B members	Toromoja	"
	Boteti	15	Students	Orapa	"
<b>Total No.</b>	<b>Participants</b>	<b>86</b>			

Central	Palapye	10	4B members	Maunatlala	Successful
	Bobonong	15	Student	Tamasane	"

	Mahalapye	-	Farmers	Thokolo	Failed
	Machaneng	15	"	Mokobeng	Successful
	Palapye	20	Students	Palapye	"
<b>Total No.</b>	<b>Participants</b>	<b>60</b>			
Chobe	Chobe	40	Students	Chobe CJSS	Successful
	"	5	T/S's	Chobe	"
	"	40	Students	Chobe CJSS	Successful, They were attending a basic course
	"	-	Farmers	Pandamatenga	failed due to lack of Organisation
	"	-	"	Kachikau	
<b>Total No.</b>	<b>Participants</b>	<b>85</b>			

## II BEE MANAGEMENT ACTIVITIES

These activities included follow-ups, inspections of colonies capturing of wild colonies and swarms, hiving them and doing extension activities.

### (i) Gaborone Region

Many wild colonies and swarms were reported during this reporting year. Sixty percent of our time was spent in assisting the public in removing the bees from their compounds, mainly in ceilings, wardrobes etc. The colonies were hived for farmers who wanted them or united with others to make strong colonies.

The office made follow-ups to course participants and inspection of colonies were made during these follow-ups.

Individual farmers and groups were not starting the project because of lack of funds to purchase the equipment, individual farmers were thus advised to utilise the Financial Assistance Policy (F.A.P.) and the groups were advised to use AEIO funds. Some farmers colonies were also strengthened. It was realised that the same beekeepers are engaged in other activities thus little time dedicated to the project and this resulted in poor management and colonies absconding. Some school clubs are inactive as teachers are ever transferred or given extra duties thus resulting in poor supervision of students. Slides shows were done for the 4B clubs, groups and the community at large.

4B shows were attended and lecturers made to club members.

All the Regional Agricultural Shows and International Trade Fair were attended. The turn-up at the stall was good. Kgotla meetings were held for Kweneng South and West and the public was briefed on the importance of beekeeping, colony and swarm capturing. The office is continuing to manage the Denman Rural training Centre Apiary and the Government Apiary.

### (ii) Southern Region

The office have been doing follow-ups to assist the public with capturing and hiving of colonies and swarms. The office also



assisted the Western region with colonies which were trapped using trap boxes. The Gaborone office also took a colony to Motokwe from the Apairy. The other 12 colonies/swarms were given to farmers in the region. Some of these colonies which were given to farmers absconded due to poor management.

(iii) Central Region

The Central region is manned by an officer from Mahalapye. The office is covering the six districts. The officer have managed to cover five districts only.

Follow-ups were done in some areas but most of the time the officer was frustrated by the transport. Follow-up was done to the Dikukumuru project in Serowe and the project have just started with horticulture only. Lotsane Senior Secondary school club also was followed up and they are to fence their Apiary and transfer the colonies to the site.

The Palapye development Trust colony is poorly managed. However the trust have been given protective clothing so that they can manage the colonies on their own. Some farmers still depend on the office to do inspection of their colonies.

(iv) Western Region

Even though the office have got no transport, the Officer managed to attend some few cases which were pending for a long time. The Gantsi beekeepers were visited and their colonies are doing well. The two beekeepers have not attended a course however their colonies are well managed.

The Itekeng Community Junior Secondary School's colonies are doing well. The students do not have experience in handling colonies. There is an expert who is having a colony in a langstroth hive and other accessories such as bellow smokers, bee brush etc. He is in Dekar. The bees are having a very good bee pasture as the owner is a Horticulturist. Charleshill Secondary school have got one colony and the management is good.

There are two colonies in kaecgae and the other one is very weak. They are managed by the remote Area Dwellers. It was suggested that they be given to the school 4-B so that management can be done.

The Kang government apiary is doing well and had been boosted with colonies from pharing in Kanye.

During the follow-ups in Tsabong, it was realised that the honey - hunters chop the wild colonies. There is only one beekeeper in the area.

The Gakhibana group is not yet established and the group has re-applied for AEIO funds.

Liason with the R.A.D.o office have been done for some settlement to start the project.

(V) Ngamiland Region

This region covers Ngamiland and chobe district. Since the officer in Maun was new to the office, there was a need for an orientation tour through out the region so as to familiarise her with the projects undertaken in the region.

Much time was allocated to creating awareness through courses and Kgotla meetings. Some colonies were captured and hived for farmers, school clubs and 4.B groups. However, some absconded due to pests.

Kasane office suffered many colonies absconding due to vandalism and pests.

(VI) Francistown Region

The office spent 40% of their time capturing wild colonies. These colonies were hived and many absconded due to several reasons. This included unpleasant smells of timber used, unshaded hives and poor management practises by the farmers. They depend solely

on the office to do the inspection and other management duties in their apiaries.

Follow-ups within the region are hampered because of transport shortage. However some areas were followed up.

Mosetse group is still inactive and efforts are made to revive it. There is no co-ordination thus resulting in poor management of the colonies.

### 111 Agricultural shows and International Trade Fair

All the regions attended the Agricultural shows and International Trade Fair in their respective districts. They either had their stalls or combined the R.T.C's staff.

#### (IV) Procurement of equipment and protective clothing

Most farmers are afraid of being stung. Therefore the office have secured funds in the below - the - line vote to purchase some equipment especially the protective clothing and sell them to farmers. This has been going on smoothly and the demand is really high. So far the only area where we purchase the protective clothing is South Africa and the orders takes a long time to arrive. The unit is trying hard to see if they cannot find anybody locally to make the protective clothing.

The following are the figures for the protective clothing already sold:-

Region	No of bee veils	No of bee brush	No of Helmets	No of Smokers	No of Hive tool	No of gloves	Overalls
Central	9	1	1	3	1	7	1
F/town	-	-	-	-	-	-	-
Ngamiland	-	-	-	-	-	-	-
Southern	5	-	-	-	-	5	-
Western	6	-	-	-	-	2	-
Gaborone	4	-	-	-	1	4	-
<b>Total</b>	<b>24</b>	<b>1</b>	<b>1</b>	<b>4</b>		<b>18</b>	<b>1</b>

The prices for hives are escalating and many farmers can't purchase them. The Apicultural support staff in the regions are trying to compare prices and advice farmers to where they can purchase hives. Some beekeepers attempted to make their own hives from cheap planks but the bees abscond despite baiting and using the right dimensions. Sometimes the planks have got a bad smell thus uncomfortable for the bees.

11/...

V Distribution of colonies at the end of financial year 1990/91

Region	District	Ext Area/ Place	Owner	No of Colonies	Kg Harvested	Remarks
Gaborone	B/Tlokweg	B/hurst	Mr Hershveld	1	3.2	Honey consumed at home colony active.
	"	G/West	Mr Mosinyi	3	Unrecorded .	Harvested without the office staff colonies active
	"	Bokamoso Sec. Sch.	School Club	2	-	Hives filled mid year. Active colonies & active club supervisor & students.
	"	Ext 9	Mr Mokobi	1	-	Colony established mid year . Colony building up.
	"	Bokamoso Sec .Sch .	Hobbyist	1	-	Colony building up. Established mid year. .
	"	G.S.S	School Club	1		" "
	"	G.S.S	Workers group	1	-	Colony was nearly vandalised . Colony is active.
	"	Naledi Sec. Sch .	School Club	1	7	Combs crossed but straightened. Colony active.
	"	St. Josephs	School Club	1	-	Management poor . Colony is building up.
	"	Moselesele	Mr Ntshonono	1	-	Colony strong
	"	Moselesele	Mrs Hudson	1	Unrecorded	" "
	"	Mokolodi	Mrs Kibby	2	Unrecorded	" "
	"	Ramotswa	Mr Kereng	1	26	" "
	"	"	Mr Mosepele	2	21	Colonies strong. The third was swept away by rains.
	"	Otse	Mr Nyirenda	1	-	Poor management colony streghened

Gaborone	B/Tlokweg	Otse	Moeding Sch Club	1	1	The other two absconded No proper supervision of student as teacher is supervising two clubs.
	"	Metsimotlhabe	Mr Mocothi	1	-	Colony newly established during last quarter
<b>Sub</b>	<b>Total</b>			<b>21</b>	<b>57.2</b>	
Gaborone	Kgatleng	Boseja	Ms Modikwe	1	9	A strong colony .
	"	"	Kgafela 4B	1	-	Newly established colony building up.
	"	Rasesa	Mr Sekoboane	1		A strong colony It was nearly vandalised and culprit ran away after they got stung.
<b>Sub</b>	<b>Total</b>			<b>3</b>	<b>9</b>	
Gaborone	K/North	Mogoditshane	Mr Khunou	1	-	Ants are a problem advised to continue controlling with different method
<b>Farmers</b>	<b>Grand</b>	<b>Total</b>		<b>35</b>	<b>131.2</b>	
<b>Sub Total</b>	Gaborone	Government Forestry Sebele	Government	15	-	The torrential rains in January/February reduced the bee pasture thus less produce.
<b>Regional</b>	<b>Grand Total</b>			3		
				18		
				53	131.2	
Southern	Ngwaketse West	Sekoma	Farmer	1	-	Established in October. It's doing well
	"	Jwaneng	Mr Mokaila	1	-	Transferred from Cardbox into T.T. B hive in September.
	"	Pitseng	Farmer	1	-	Not cared thus no harvest.
	"	Ralekgetho	Farmer Proposed	1	-	Likely to be harvested in May, 1991.
	"	Sesung	group	1	-	Swarmed in December
	<b>Sub</b>	<b>Total</b>		<b>5</b>		

Southern	Ngwaketse North	Moshaneng	Headman	1	-	Newly established after the old one absconded
	"	Moshupa	School Club Moshupa	3	-	Established in December and February
	"	Moshupa	Hobbyist	1	Unreco rded	Colony in good condition
	"	Kanye	Lutheran Church	1	-	Divided itself
	"	"	Farmer	1	-	Swarmed thus no harvest
	"	"	Victor	1	-	Colony hived Noahs hive progresing slowly.
	"	"	Mr Fahang	1		Established end of 1991
	"	"	Mr Mosepele	4	5.8	Only two colonies harv- ested. Others have enough stores
<b>Sub</b>	<b>Total</b>			<b>13</b>	<b>5.8</b>	
	Ngwaketse Central	Farmer	Ramoneddi	2		One is newly established another in Noah's hive is doing well.
	"	Mrabadisa	Mr Bome	1		Swarmed thus no harvest.
	"	Molapowabo	Mr Letshabo	1		Swarmed. Harvest expected in May.
<b>Sub</b>	<b>Total</b>			<b>4</b>		
	Ngwaketse South	Mogojogoj Gamajaalela	Mrs Karrim	1		Colony is building up
	"	Mmalore	Mrs Maoto	1		Colony swarmed
	"	Metlobo	Mrs Karodi	1	Unreco rded	Farmer did not record. Colony is strong.
	"	Mabule	Mrs Sekalaba	1		Established in December
	"	Lorolwane	Beekeeping Club	2	-	Divided in October and are doing well.
	"		Farmer	1		Pestered by ants
<b>Sub</b>	<b>Total</b>			<b>7</b>	<b>-</b>	

Region	District	Ext. Area/Place	Owner	No. of Colonies	KG Harvested	Remarks	
	Barolong	Metlojane	Mrs Lefenya	1	-	Harvest expected in April Hived in brood. Chamber. Farmer advised to buy a bigger hive.	
		"	Mr khanfure	1	-		
		Lobatse	Mr Marumo	1	-		Established in August after another absconded.
		"	Mr Going	3	Unrecorded	Good Colonies	
		Sub Total			6		
		Farmers Grand Total			26	5.8	
Western	Ghanzi	Regional	Grand Total	38	52.5		
		Charleshill	Charleshill C.J S.S. Club	1	-	Newly established	
		"	Ghanzi Township	Itekeng C.J. S.S	2	6.5	Two absconded the other left are doing well.
		"	" "	J. Mosaïse	2	-	Colonies are building up.
		"	" "	Mrs. Vice	2	-	Newly established and very strong.
		"	Kacgae	RAD Farmers	2		Management poor



Ghanzi	Dekar	Farmer	1	-	Progressing well
	<b>Sub</b>	<b>Total</b>	10	6.5	
Kgalagadi North	Kang	Machangana	2	-	Colonies doing well
	"	Matsha Club	3	-	Colonies poorly managed
	<b>Sub</b>	<b>Total</b>	5	-	
Kgalagadi South	Tsabong	Farmer	1	1	doing well
	<b>Sub</b>	<b>Total</b>	1	-	
<b>Farmers</b>	<b>Grand</b>	<b>Total</b>	16	7.5	
Kgalagadi North	Forestry Kang	Government	2	-	4 colonies absconded
" South	Lobu Field station	"	4	15	Colonies are strong
<b>Regional</b>	<b>Grand Total</b>		22	22.5	
Ngamiland Ngami East	Sehitwa	Beekeeping Sch. Club	1	-	2 colonies absconded due to pests bee pasture was scorce
" "	Maun	Tsodilo C.J S.S. Club	1	-	Bees are active were vandalised and of December.
" "	Maun	Farmer	1	-	Bees active
" "	Maun	Maun Sec	6	12.5	Bees are strong
" "	Khwai	Group	1	-	Hived recently
	<b>Sub</b>	<b>Total</b>	13	12.5	

	Ngami East	Nxaraga	Government	2	-	Colonies are building up.
	Chobe	Kasane	"	1	-	2 vandalised remaining colony is strong.
	"	"	C.J.S.S	1	-	Newly established a good colony.
	"	Pandamatenga	Farmer	1	-	Newly hived colony in good condition
		<b>Regional Grand</b>	<b>Total</b>	<b>18</b>	<b>12.5</b>	
Francistown	Tonota	Tonota	Farmer	1	-	Colony is active
	"	Shashe	Farmer	1	-	Newly established colony progressive.
	"	Thakadiawa	Farmer	1	-	Expected harvested in May.
		"	"	1	-	Newly established
		<b>Sub Total</b>		<b>4</b>	<b>-</b>	
	Tutume	Mosetse	Group	5	-	Active colonies need proper management
Francistown	Tonota	R.T.C	Government	5	Unrecorded	Colonies infested by ants
	<b>Regional</b>	<b>Grand Total</b>		<b>14</b>	<b>12.5</b>	

Central	Boteti	Orapa	School Club	1	-	Three Colonies absconded during holidays.	
			Sub Total	1			
	Serowe	Serowe	Farmer	1	-	Colony is active	
			"	1	-	Colony is active	
			Sub Total	2			
	Palapye	Palapye	Development Trust	1	-	Colony poorly managed.	
			"	2	-	School Club had poor management of colonies.	
	"	"	Farmer	1	-	Newly established	
				Sub Total	4		-
				Mahalapye	Mahalapye		Farmer
	"	1	-			Colonies building up	
	"	1	-			" " "	
	"	1	-			" " "	
	"	1	-			" " "	
	"	Shoshong	Development Trust	1	-	" " "	
"	Mahalapye	Prison	1	-	" " "		

Central	Mahalapye	Mookane	A/D	1	-	Colonies building up Colony doing well Harvest from 2 colonies. Others are doing well.
	"	Mahalapye	D.A.O	1	-	
	"	"	R.T.C	8	18	
				20	18	
	Māchaneng	Chadibe	Farmer	1	-	Newly established Good colony.
		Moshupa	Farmer	1	Unrecorded	
		Sub Total		2		
	Regional	Grand Total		29	18	

### General comments

This year's harvest is very low compared to the last years report. This had been attributed by the dry spell from October and followed by torrential rains in January, February which then forced the bees to be in hives and utilise their stores instead of foraging and storing food. On the other hand figures shows that creation of awareness has been made greatly and the number of colonies established have also increased. Though cases of absconding have been reported the beekeepers are trying hard to manage their colonies by adhering to advices given to them by Technical Officers.

Poor follow-ups are still realised because of lack of transport through-out the country.

The report also shows that some harvests were not recorded because farmers did them individually. This is because some farmers do not keep records of their colonies. The unit is still having the problem of farmers leaving their colonies unattended resulting in colonies swarming and harvests lost. The unit is selling protective clothing (especially the bee veils and gloves) to the beekeepers so that they can work independently without waiting for the beekeeping staff to do the operation.

### Conclusion

The project is gaining momentum and people are now realising its importance. Groups are also formed and this will facilitate the production of the bee products not only for consumption but also for sale. Individual farmers using the government schemes are also engaging in the project. More farmers will be encouraged to utilise the government schemes especially those who have already started practising backyard beekeeping.

Transport is still a burning issue in the regions for Technical Officer's to reach the target group. Beekeeping is mostly practical and if transport is not supplied, nothing can be done. Commercial projects need regular follow-ups to ensure proper management and without transport, it is really difficult.

Prepared by,

K.M. Kapaletswe

SENIOR TECHNICAL OFFICER - BEES